

WELCOME TO SKILLFUL PRINTING

INTRODUCTION

In past days, purpose of packaging was to protect, transport and preserve products. The only thing to consider was the size, material, and it should therefore be relatively durable. Nowadays the packaging of a product is equally as important as the product inside, and aside from the basic role of packaging (durability, protection...), other aspects such as visual, sustainability, touch, and even smells have become essential aspects of consumer products trade strategies and, more importantly, the only thing responsible for “dressing” the product and ensuring it appears more attractive and stands out from all its competitor’s product.

While being in packaging over the past 3 decades as a factory, we value the importance of packaging, and how to reproduce them right.

— INDEX —

Start your packaging journey
with SKILLFUL PRINTING



FACTORY INFORMATION

FACTORY INTRODUCTION	4
CERTIFICATION	8
PROFILE	10
FACTORY INVENTORY	11
CAPACITY	21
LEAD TIME	22
SHIPPING	23

PRODUCT

HANGTAG	24
GARMENT TRIMS PACKAGING	30
UPC AND LABEL	33
FOLDING BOX	35
CORRUGATED PACKAGING	45
RIGID BOX	50
INSERT	54
DEVELOPMENT	57

SKILLFUL PRINTING NEW FACTORY 2021

During 2021, Skillful expanded to a 6 stories, 200,000 sq feet factory to continue upgrading our capability, product quality and service.



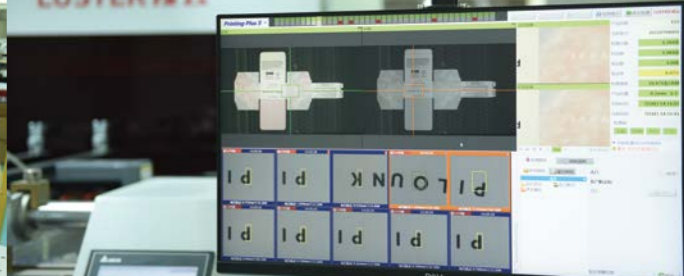
LEVEL 7+8

WAREHOUSE & STORAGE
SHIPPING DEPARTMENT



LEVEL 6

RIGID BOX PRODUCTION LINE
QUALITY CHECK & INSPECTION
LABORING



LEVEL 5

LABEL & HANGTAG
ENVELOP BINDING



LEVEL 4

PRODUCTION TEAM
DESIGN TEAM
DIGITAL STORAGE
DIGITAL PRINT
MOCK UP SAMPLING



LEVEL 3

COATING/ LAMINATION
SPOT UV PRINTING
SILK SCREEN PRINTING
BOX AND WINDOW GLUING
LABORING



LEVEL 2

LITHO LAMINATING
DIE CUTTING
EMBOSSING
FOIL STAMPING



LEVEL 1

PRINTING DEPARTMENT
CTP & COLOR MANAGEMENT
MATERIAL STORAGE



CERTIFICATION AND STANDARDS



DISNEY

Facility and Merchandise Authorization (FAMA)

FAMA, Facility and Merchandise Authorization, is the certification authorized by Disney. They are committed to respecting human rights, monitoring the safety and integrity of products, and reducing the environmental footprint of their supply chain.



Oeko-Textile

Woven fabrics made of 100% nylon and 100% polyester, dyed, with water-proof.

If a textile article carries the STANDARD 100 label, you can be certain that every component of this article, i.e. every thread, button and other accessories, has been tested for harmful substances and that the article therefore is harmless for human health. The test is conducted by our independent OEKO-TEX® partner institutes on the basis of our extensive OEKO-TEX® criteria catalog. In the test they take into account numerous regulated and non-regulated substances, which may be harmful to human health. In many cases the limit values for the STANDARD 100 go beyond national and international requirements. The criteria catalog is updated at least once a year and expanded with new scientific knowledge or statutory requirements.



FSC

Forest Stewardship Council Certified

Forest Management Certification gives the public reassurance that timber products originating from a forest are managed in a responsible and sustainable way.



ISO 9001:2015

Quality Management System



BSCI

Member of BSCI



Higg Index

Sustainable Apparel Coalition



G7

G7 Master Qualification

The amfori Business Social Compliance Initiative (BSCI) is an industry-driven movement that aims to monitor and assess workplace standards across the global supply chain. ... A amfori BSCI audit helps a business monitor its supply chain to ensure that all suppliers are treating workers ethically and legally.



ISO 9001 is defined as the international standard that specifies requirements for a quality management system (QMS). Organizations use the standard to demonstrate the ability to consistently provide products and services that meet customer and regulatory requirements. It is the most popular standard in the ISO 9000 series and the only standard in the series to which organizations can certify.



Developed by the Sustainable Apparel Coalition, the Higg Index is a suite of tools that enables brands, retailers, and facilities of all sizes — at every stage in their sustainability journey — to accurately measure and score a company or product's sustainability performance. The Higg Index delivers a holistic overview that empowers businesses to make meaningful improvements that protect the well-being of factory workers, local communities, and the environment.



The G7 Master standard is a facility qualification provided by Idealliance. This qualification demonstrates that a printing facility has calibrated its equipment to G7 requirements. The G7 Master Qualification is intended for physical facilities that offer print, pre-media, or creative services.



Company Profile

Name: **Skillful Int'l. Printing Co. Ltd.**

Year of Establishment : 1988

Number of Staff : 230

Nature of Business: Packaging Manufactuer

Head Office: Hong Kong

Branch : Shenzhen China, Hong Kong,

Vietnam, USA

Skillful Staff

Production : 170

Quality Control : 20

Research & Development : 15

Account Manager : 12

Marketing : 5

Procurement : 5

Skillful Standards and Certification

Forest Stewardship Council (FSC) Certification

BSCI Social Compliance Initiative

OEKO-TEX STANDARD 100

ISO 9001:2015

G7 Master Color Management

Disney FAMA (Facility and Merchandise Authorization)

Higg Index

Skillful Factory

Facotry 1) Shenzhen Bao'an, China

Size: 200,000 sq feet

Factory 2) Vietnam

Size: 50,000 sq feet

Factory 3) Hong Kong

Size: 3000 sq feet

Skillful Product

Hangtag

Folding Carton Box

Rigid Box

Paper Tube

Corrugated cardboard box

Heatseal Clamshell Cards

Paper Bags

Adehesive labels

Wash tag, Garment labels

RFID

Polybags & Foil Sealed Bags

Vacuum Molded Tray

Paper Pulp Tray

Wrapping Paper (Tissue Paper)

MACHINE	FUNCTION	SETS
SCREEN 1200	Artwork to Print Plate (CTP)	1 set
HP Digital Printer	Digital sampling and proofing	2 sets
CNC Diecutter	Packaging development, structure design	4 sets
ROLAND 200	2 colors offset printpress	3 sets
ROLAND 500 HiPrint	5 colors + varnish offset printpress	1 set
ROLAND 700 HiPrint	5 colors + varnish offset printpress	1 set
ROLAND 700	6 colors	1 set
ROLAND 700 (UV)	7 colors + varnish offset printpress	1 set
Litho Laminator	Corrugated and paper board lamination	1 set
Silk-Screen Printer	Silk screen printing	4 sets
Calendering Machine	Calendering Coating	1 set
Paper Coating Laminator	Coating Lamination (Gloss, Matte, Soft-Touch etc.)	3 sets
UV coating Machine	Spot UV coating	4 sets
Embossing Machine	Embossing	4 sets
Semi-auto Diecutting Machine	Diecutting	8 sets
Automatic Diecutting Machine	Hi- Speed diecutting	2 set
Box Window Lamination Machine	Plastic film to box	2 sets
Hot Stamping Foil Machine	Hot stamping foil print	4 sets
Box Gluing Machine	Automatic gluing and folding box	5 sets
Packaging scanner	Packaging inspection	2 sets
High Frequency Press	Plastic Crease with high frequency	1 set

PRINT PRESS



ROLAND 700

Technical Specification

Sheet output max. (sheets/h)
8,000
Sheet output in perfecting mode (sheets/h)
5,000
Max. sheet format (inch)
30 x 40
Max. printing area (mm)
29 x 39
Stock thickness range (mm)
0.06 to 0.60

Color: 7 + UV Varnish
Setting: UV Offset



ROLAND 700

Technical Specification

Sheet output max. (sheets/h)
8,000
Sheet output in perfecting mode (sheets/h)
5,000
Max. sheet format (inch)
28x38
Max. printing area (inch)
27x37
Stock thickness range (mm)
0.06 to 0.60

Color: 6
Setting: Offset



ROLAND HiPrint 700

Technical Specification

Sheet output max. (sheets/h)
8,000
Sheet output in perfecting mode (sheets/h)
5,000
Max. sheet format (inch)
30 x 40
Max. printing area (inch)
29 x 39
Stock thickness range (inch)
0.06 to 0.60

Color: 5 + Varnish
Setting: Offset



ROLAND HiPrint 500

Technical Specification

Sheet output max. (sheets/h)
8,000
Sheet output in perfecting mode (sheets/h)
5,000
Max. sheet format (inch)
21x31
Max. printing area (inch)
20x30
Stock thickness range (mm)
0.06 to 0.60

Color: 5+Varnish
Setting: Offset

ORGANIZED WORK SPACE



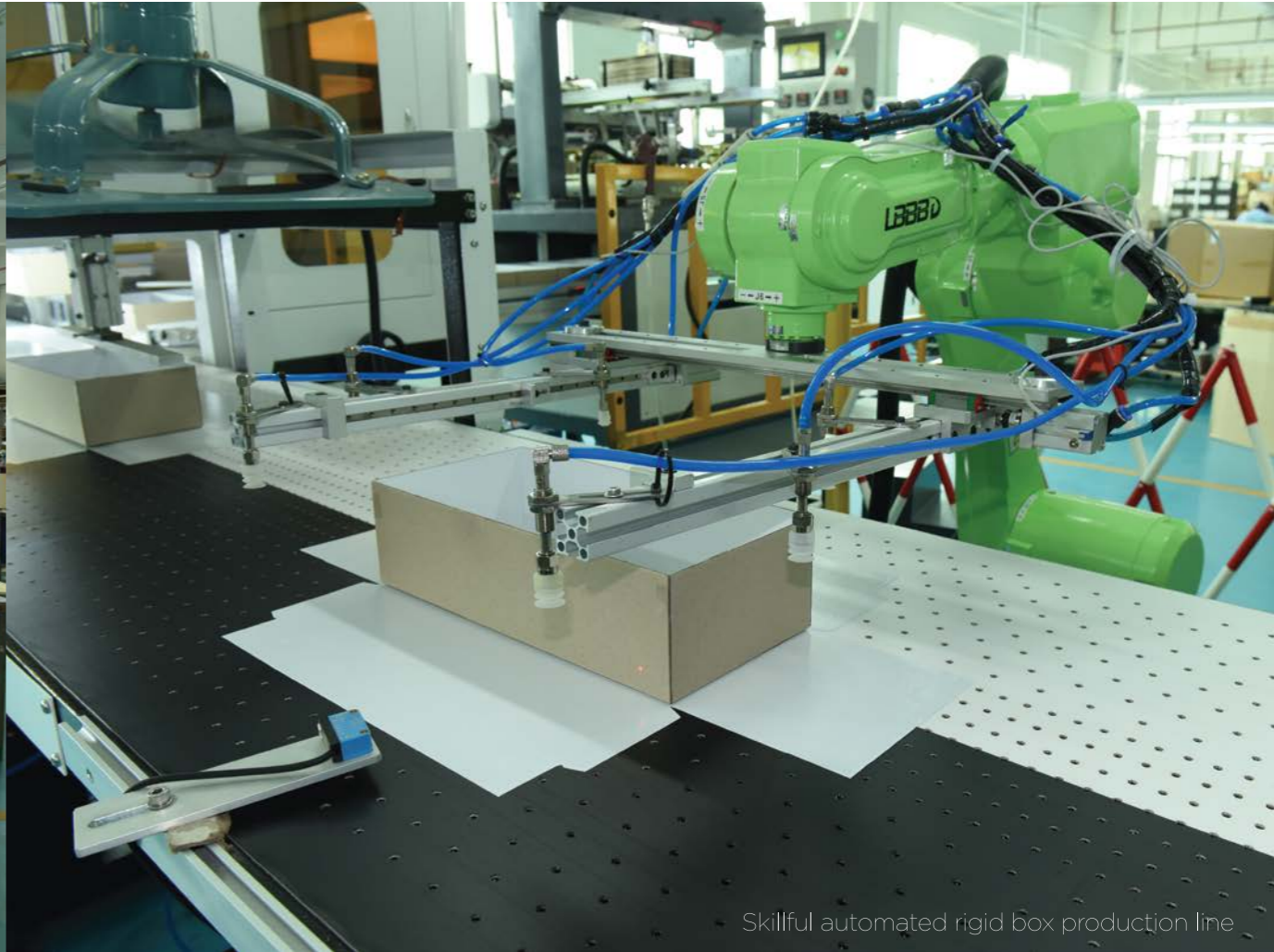
The new Skillful 6 storey factory located at Bao'an, Shenzhen sits on the vein of main transportation highway in South China which is easily accessible to Shenzhen airport, Yian-tian port, and Hong Kong ports. Each of the 6 floor has 25,000 sq feet work space and each floor is carefully designed to fit in our production chain to allow organized and smooth production flow.

TRADITIONAL PRODUCTION



Skillful Labour Production Team

DIGITAL AUTOMATION



Skillful automated rigid box production line

Skillful never gave up on traditional packaging production to provide flexibility for complex packaging. We treat packaging as a piece of art and fine craftsmanship is essential.



Skillful is constantly investing into new automation equipment to improve efficiency, product quality, variety for packaging products.



PRINT PRODUCTION



Skillful is equipped with 7 high end ManRoland print presses to accomodate different projects size to optimize cost and wastage.

COLOR MANAGEMENT



Color Managment system to calibrate, digitally control and measure color effeciently.



ANNUAL CAPACITY

LEAD TIME

PRODUCT	QUARTER	ANNUAL	PRODUCTION LEAD TIME				
			SAMPLING	5,000	30,000	100,000	500,000
HANGTAG	25,000,000	100,000,000	14-17 days	14-21 days	14-21 days	14-21 days	14-21 days
FABRIC LABEL	25,000,000	100,000,000	14-17 days	14-21 days	14-121 days	14-21 days	14-21 days
FOLDING CARTON	12,500,000	50,000,000	14-17 days	14-21 days	14-21 days	14-21 days	21-28 days
RIGID BOX	500,000	2,000,000	14-17 days	14-21 days	21-28 days	21-28 days	21-28 days
CORRUGATED CARTON	12,500,000	50,000,000	14-17 days	14-21 days	14-21 days	14-21 days	21-28 days
ADHESIVE LABEL	25,000,000	100,000,000	14-17 days	14-21 days	14-21 days	14-21 days	21-28 days
HEATSEAL CARD	20,000,000	80,000,000	14-17 days	14-21 days	14-21 days	14-21 days	21-28 days
POUCHES	1,000,000	4,000,000	14-17 days	14-21 days	14-21 days	14-21 days	28-35 days

Above are general statistic volume, number may varies for individual product.

SHIPPING INFORMATION

SHIPPING TIME FROM SKILLFUL PRINTING (SHENZHEN, CHINA)



*Below information does not include custom, and local transit time

NORTH AMERICA

UNITED STATES OF AMERICA 🇺🇸

CANADA 🇨🇦

	LOS ANGELES	SEATTLE	CHICAGO	DALLAS	NEW YORK	MIAMI	ATLANTA	HAWAII	VANCOUVER	TORONTO
✈️	2 Days	3-5 Days	3-5 Days	3-5 Days	3-5 Days	3-5 Days	3-5 Days	5-7 Days	2 Days	3-5 Days
🚢	14 Days	20 Days	25 Days	25 Days	28 Days	33 Days	25-35 Days	28 Days	19 Days	25 Days

SHIPPING TIME FROM SKILLFUL PRINTING (SHENZHEN, CHINA)



*Below information does not include custom, and local transit time

EUROPE

UK 🇬🇧

NETHERLANDS 🇳🇱

FRANCE 🇫🇷

PORTUGAL 🇵🇹

BELGIUM 🇧🇪

GERMANY 🇩🇪

	LONDON	FELIXSTOWE	AMSTERDAM	ZURICH	PARIS	LE HARVE	FOS	LISBON	ANTWERP	FRANKFURT
✈️	3-5 Days	--	5-7 Days	5-7 Days	3-5 Days	--	5-7 Days	5-7 Days	5-7 Days	3-5 Days
🚢	35 Days	30 Days	26 Days	26 Days	30 Days	25 Days	28 Days	35 Days	25 Days	35 Days

NORTH AMERICA

SOUTH AMERICA

	CANADA 🇨🇦	MEXICO 🇲🇽			PERU 🇵🇪	BRAZIL 🇧🇷		CHILE 🇨🇱		
	MONTREAL	MANZANILLO	LAZARO CARDENAS	VERACRUZ	CALLAO	LIMA	SANTOS	PARANAGUA	VALPARAISO	IQUIQUE
✈️	3-5 Days	3-5 Days	5-7 Days	5-7 Days	--	7-10 Days	7-10 Days	7-10 Days	7-10 Days	7-10 Days
🚢	25 Days	24 Days	23 Days	29 Days	35 Days	--	32 Days	45 Days	30 Days	38 Days

EUROPE

MEDITERRANEAN

	GERMANY 🇩🇪		POLAND 🇵🇱		SPAIN 🇪🇸		ITALY 🇮🇹		ISRAEL 🇮🇱	
	HAMBURG	MUNICH	GDANSK	WARSAW	BARCELONA	VALENCIA	GENOVA	MILANO	ROMA	ASHDOD
✈️	--	3-5 Days	--	3-5 Days	5-7 Days	5-7 Days	--	5-7 Days	5-7 Days	--
🚢	26-29 Days	35 Days	30 Days	35 Days	28 Days	25 Days	25 Days	30 Days	30 Days	17 Days

SOUTH AMERICA

MIDDLE EAST

	CHILE 🇨🇱	VENEZUELA 🇻🇪	COLOMBIA 🇨🇴		ARGENTINA 🇲🇯	QATAR 🇶🇦	UAE 🇦🇪		KUWAIT 🇰🇼	
	ARICA	MARACAIBO	BUENAVENTURA	CARTAGENA	BUENOS AIRES	DOHA	DUBAI	ABU DHABI	JEBEL ALI	KUWAIT CITY
✈️	7-10 Days	7-10 Days	7-10 Days	7-10 Days	7-10 Days	2-3 Days	2-3 Days	3-5 Days	--	3-5 Days
🚢	45-50 Days	45-50 Days	35 Days	35 Days	35 Days	20 Days	17 Days	--	17 Days	20 Days

MEDITERRANEAN

OCEANIA

	ISRAEL 🇮🇱	TURKEY 🇹🇷		GREECE 🇬🇷	AUSTRALIA 🇦🇺				NEW ZELAND 🇳🇿	FIJI 🇫🇯
	TEL AVIV	ISTANBUL	IZMIR	ATHENS	PERTH	MELBOURNE	SYDNEY	BRISBANE	OAKLAND	FIJI
✈️	3-5 Days	3-5 Days	--	5-7 Days	3-5 Days	2 Days	2 Days	2-4 Days	3-5 Days	5-7 Days
🚢	21 Days	24 Days	32 Days	28 Days	21 Days	16-18 Days			23 Days	28 Days

ASIA

	KOREA 🇰🇷		SINGAPORE 🇸🇬	INDONESIA 🇮🇩	VIETNAM 🇻🇳		PHILIPPINES 🇵🇭	MALAYSIA 🇲🇾	JAPAN 🇯🇵	
	BUSAN	INCHEON	SINGAPORE	JAKARTA	HAI PHONG	HO CHI MINH	MANILA	KUALA LUMPUR	TOKYO	NAGOYA
✈️	--	2 Days	2 Days	2 Days	2 Days	2 Days	2 Days	2 Days	2 Days	2 Days
🚢	5 Days		3-5 Days		5-10 Days					



HANGTAGS



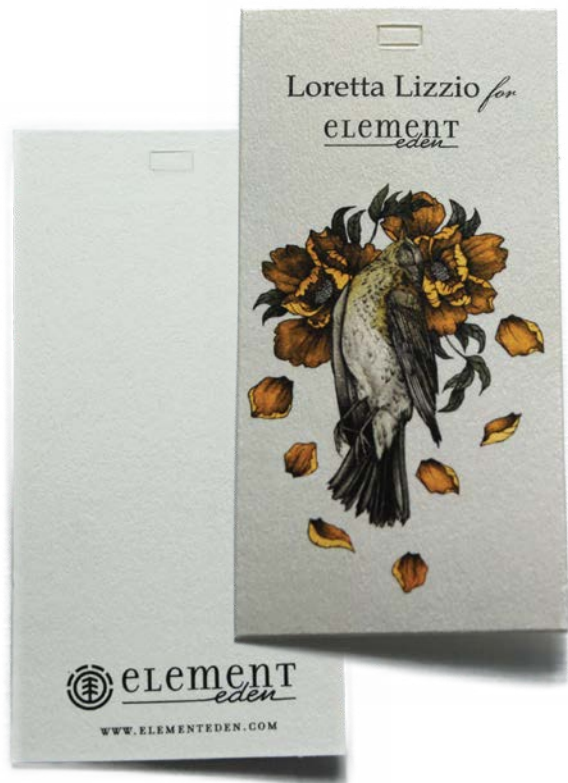
TAG & LABELS

Garment Hangtags - UPC Tags - Labels

A tag attached to a garment or other piece of merchandise that includes information about the manufacturer or designer, the fabric or material used, the model number, care instructions, and sometimes the price.

Hangtag marketing is a retail staple and for good reason. Hangtags can attract attention to sales and make the difference between the purchase of one product or another — or even both! Like all marketing materials, hangtag marketing is a science. You have to do it right to get results.





Specification
 Paper 250gsm + 250gsm Textured paper
 Color 6 + 1C
 Finishing Gloss Varnish and Card laminated 2 in 1

Gloss varnish to highlight and enhance the paper texture, also to preserve printed colors.



Specification
 Paper 300gsm+250gsm+300gsm Kraft paper
 Color CMYK
 Finishing Card Lamination, Dot Stitching, Denim Effect

Dot Stitching in surface on the tag only.
 Handcrafted Denim effect on tag edges.



Specification
 Paper 300gsm Silky Paper, Custom Color*
 Color 2 color Silk Screen
 Finishing Matte Varnishing Coat

Used Silk Screen Print to achieve solid result of the displayed words.

Paper color is custom made by paper factory.



Specification
 Paper 300gsm+300gsm 1/S Silver Card
 Color CMYK UV PRINTING
 Finishing Gloss Lamination, Card Lamination

Silver Card Handtag by UV Printing.



Specification
 Paper 300gsm Textured paper
 Color CMYK
 Finishing Matte Lamination

Custom Strip Print Strings with Copper Pin.



Specification

Paper 350gsm 1/s Artboard +
150gsm Adhesive Sticker

Color 1 Color

Finishing Matte Lamination,
Hot Stamp Foil, Nylon String

String tied over 3 holes.
Sticker Hangtag.



Specification

Paper 300gsm 2/S Coated Artboard

Color 2+1C (Pantone)

Finishing Matte Lamination,
Hot Stamp Foil
Strings to match tag color

Detail hot stamp foil.
String matching tag color.



Specification

Paper 300gsm+300gsm Kraft Paper

Color 1+1C (Pantone Base Dyed)

Finishing Matte Varnishing Coat,
Foil print and side edges

Hot Stamp Foil on the tag side edges.



Specification

Paper 350gsm Texture Paper

Color 1 Color

Finishing Matte Varnishing Coat,
Texture Deboss, Eyelet,
Cotton String

Layer of paper beneath eyelet.
Debossed texture on paper surface.



Specification

Paper 300gsm+300gsm Kraft Paper

Color 1+1C (Pantone Base Dyed)

Finishing Matte Varnishing Coat,
Hot Stamp Foil surface

Functional tag for ear rings.



Specification

Paper 250gsm Black Kraft x 3pcs

Color No Print

Finishing Matte Lamination,
Hot Stamp Foil
Strip Deboss, Eyelet

Strip Deboss on both sides.



Specification

Paper 1350gsm Recycled Kraft Paper

Color 2 Pantone Colors

Finishing Matte Varnishing Coat

Functional tag for heavy belt.





High stitch woven label
Ultrasonic Cut
End Fold



Printed label
Laser cut
Non-woven backing
Merrowed edge



Printed label
With tear away cut



Heat transfer woven label
Heat-seal backing
Flat Press

Dwell time: 15-20 second
Dwelling temperature: 160°C-200°C
Pressure: 40-60 PSI

Laundry test: 30°C temperature
machine cold, tumble dry cold



Grosgrain label
4 color stripe



Rubber Patches



Embroidery Patches



Garment Seal Tag



Rubber Zipper Head





Breakdown Plastic (BDP) is an additive that can be added to most plastic products to make it Biodegradable in Landfill and meets ASTM D5511 standard.

Below products are now available with BDP solution.

Garment plastic trims : Collar support, Collar Pin, Butterfly



Plastic Packagings Box (PP, PET, PVC)



Blister case and inserts

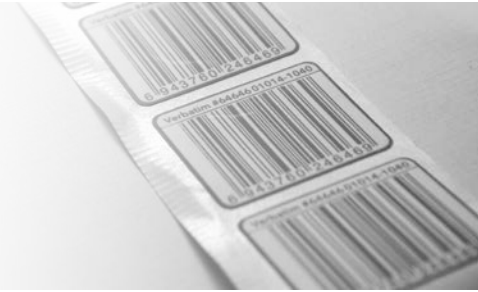


UPC TAG

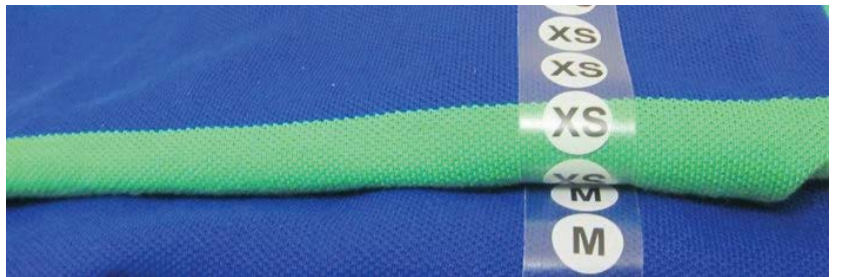


Barcode Label Printing

- *All barcode types including Interleaved 2 of 5 (ITF, I25, I2O5), Code 128 (A, B & C), Code 39 (full ASCII), EAN, EAN-13, EAN-14, UPC, UPC-A, UPC-E, GS1-128, 2D Datamatrix, QR Code, PDF147 barcodes & etc
- * Wide stock size of label. Tailor made size is welcome
- * High quality barcode label in low price
- * Fast production lead time
- * Flexible order quantity. Accept small order
- * Serial number and variable data printing
- * Used in supermarket, warehouse, access label, retail shop, clinic, garment, library, food and industrial



STICKER & LABELS



Folding Carton/Box

Page.22-31



FOLDING BOX



Product: Skincare
 Type: STE (Straight Tuck End) Carton + Liner
 Material: C1S SBS FSC Paper
 Color: CMYK + PMS
 Finishing: Soft Touch Aqueous + Hot Stamping Foil

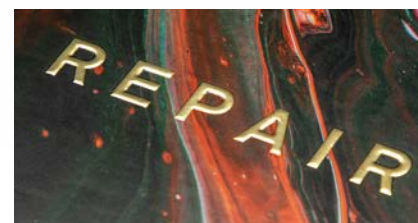
Corrugated Carton Box

Page.32-35



Rigid Box

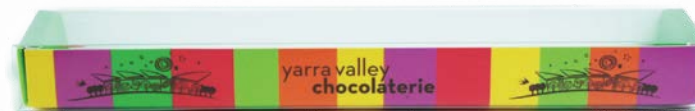
Page.36-40



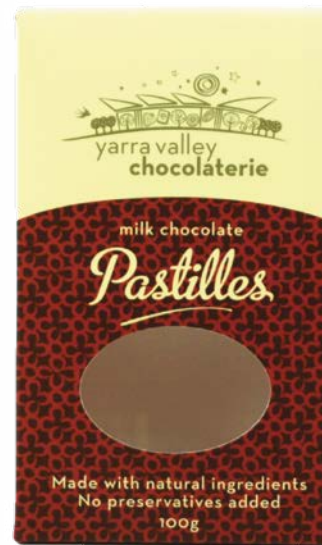
Product: Hair Product
 Type: 2 pcs telescope box
 Material: Metallic Paper
 Color: CMYK + PMS
 Finishing: Matte Varnish, Embossing



Product: Electronic Accessories
 Type: Box with Front Flap, Magnetic Closure
 Material: Paper 350gsm 1/S Coated Artboard, Blister PET
 Color: CMYK
 Finishing: Matte Lamination, Spot UV, Emboss



Packaging Product: Chocolate
 Type of Box: Match Box
 Material: 290gsm 1/S Coated Artboard + 0.5 PVC
 Color: CMYK
 Finishing: Matte Lamination
 Speciality: Clear PVC Lid Sleeve



Packaging Product: Chocolate
 Type of Box: Envelope Top Auto Bottom
 Material: 290gsm 1/S Coated Artboard
 Color: CMYK
 Finishing: Matte Lamination
 Speciality: Creative Box Shape to fit and display product

Packaging Product: Chocolate
 Type of Box: TTAB (Top Tuck Auto Bottom)
 Material: 290gsm 1/S Coated Artboard
 Color: CMYK
 Finishing: Matte Lamination
 Speciality: Creative window shape



FOLDING BOX

FOLDING BOX



Product: Lingerie
 Type: Dust Pack Box
 Material: Paper 350gsm Matallic Card, PP Hanger
 Color: CMYK
 Finishing: Gloss Lamination



Product: Lingerie
 Type: Dust Pack Box
 Material: Paper 350gsm Matallic Cardboard, PP Hanger
 Color: CMYK
 Finishing: Gloss Lamination



Product: Skincare unit carton
 Type: STE and RTE Box
 Material: Metallic Cardboard
 Color: Custom SPOT Color
 Finishing: Matte Lamination

Product: Eyelash unit carton
 Type: STE
 Material: Holographic Cardboard
 Color: Custom SPOT Color
 Finishing: Matte Lamination
 Hot Stamp Foil



Product: Eyelash unit carton
 Type: STE (Straight Tuck End)
 Material: Metallic Cardboard
 Color: Custom SPOT Color
 Finishing: Gloss Lamination

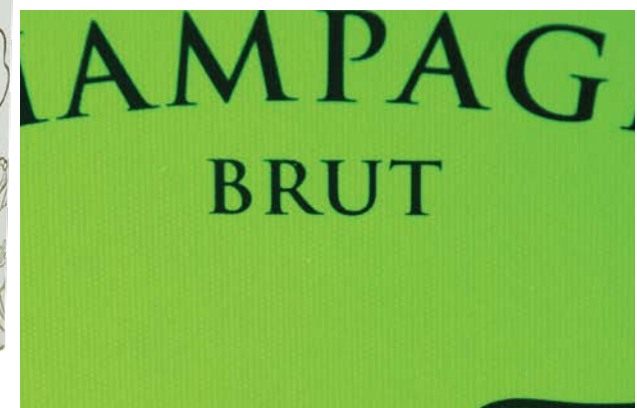


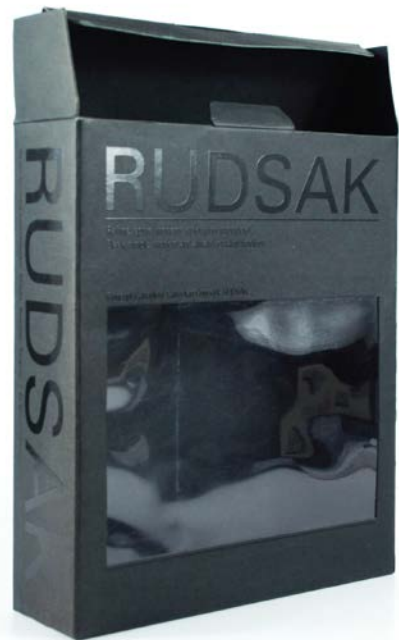
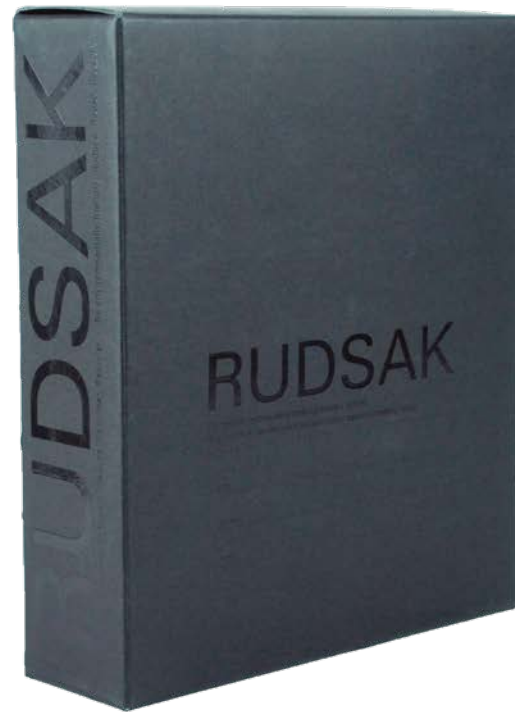
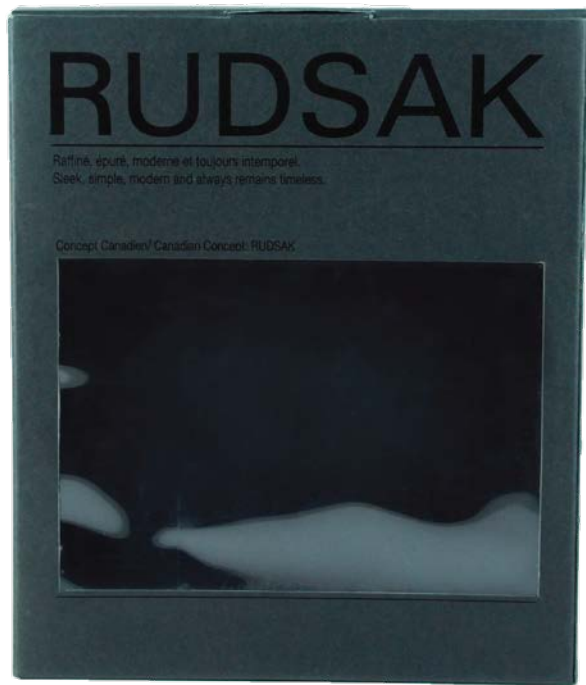


Product: Skin Care
 Type: RTE (Reverse Tuck Top)
 Material: 335gsm 1/5 Coated Cardboard
 Color: CMYK
 Finishing: Hot Stamping Foil, Pattern Debossing



Packaging Product: Wine
 Type of Box: RTE (Reverse Tuck End) with Window
 Material: 260gsm+350gsm 1/5 Coated Artboard
 Color: CMYK + 2 Pantones
 Finishing: Hot Stamp Foil, Texture Emboss
 Speciality: Heavy Strength Artboard Box





Packaging Product: Apparel
 Type of Box: TTSLB (Tuck Top Snap Lock Bottom with Window)
 Material: 250gsm+250gsm Black Kraft Paper
 Color: None
 Finishing: Spot UV
 Speciality: Used only Spot UV for entire box



Product: Electronic
 Type: Trapezoid Box (Match Box Style)
 Material: 350gsm 1/S Coated Cardboard
 Color: 3 Pantones
 Finishing: Matte Lamination



Product: Phone Accessories
 Type: Angled Tuck Top with Corner Window Box
 Material: 350gsm 1/S Coated Cardboard
 Color: 3 Pantones + CMYK
 Finishing: Gloss Lamination

Product: Phone Accessories
 Type: Tuck Top/Bottom Box with Custom Shape Window
 Material: 350gsm 1/S Coated Cardboard
 Color: 3 Pantones
 Finishing: Matte Lamination





Product: Watch
 Type: Rhombus Shape Box
 Material: PET 0.35 mm
 Color: 2 Pantones
 Finishing: Gloss



Product: Lingerie
 Type: RTE (Reverse Tuck End)
 Material: PET 0.35 mm
 Color: CMYK
 Finishing: Gloss



Product: Electronic
 Type: Quarter Circle Shape Box with Rigid Top and Bottom Lid
 Material: PET 0.35 mm + 1200gsm Rigid Lids
 Color: 2 Pantones + CMYK
 Finishing: Acetate : Gloss, Paper : Matte



Packaging Product: Apparel
 Type of Box: One piece Box with Envelope String Tie
 Material: 300gsm Kraft Paper + E Flute
 Color: 1 Pantone
 Finishing: Matte Varnish Coat
 Speciality: Envelope String Tie



Packaging Product: Cakes
 Type of Box: One Piece Barn Style Box with Handle
 Material: 300gsm Kraft Paper + White Based Food Grade F Flute
 Color: CMYK
 Finishing: Matte Lamination
 Speciality: Food Grade Paper





Product: Skincare box set
 Type: E-commerce Mailer box
 Material: C1S Paper + Corrugated Cardboard
 Color: Custom SPOT Color
 Finishing: Soft-Touch Lamination



Product: Eye lashes box set
 Type: E-commerce Mailer box with vacuum tray
 Material: Kraft paper + Corrugated Cardboard
 Color: CMYK Print inside
 Finishing: Gloss Varnish Inside



Packaging Product: Sock
 Type of Box: RTE (Reverse Tuck End)
 Material: 300gsm Kraft Paper + E Flute
 Color: 1 (Silk Screen)
 Finishing: Spot UV
 Speciality: Extra White Silk Screen, Spot UV on kraft paper



Product: Skincare box set
 Type: E-commerce Mailer box
 Material: C1S Paper + Corrugated Cardboard
 Color: Custom SPOT Color
 Finishing: Matte Lamination



Packaging Product: Apparel
 Type of Box: Match Box with Window
 Material: 300gsm 1/S Coated Artboard (Cover)+Corrugated Carton in E Flute
 Color: 2 Pantones
 Finishing: Matte Lamination
 Speciality: Match Box with Hanger Hole





Product: Garment
 Type: E-commerce Mailer box
 Material: Recycled Kraft + Corrugated Cardboard
 Color: Screen Print Spot Color
 Finishing: Natural



Product: Cannabis
 Type: E-commerce 30 packs
 Material: Metallic Paper + Corrugated Cardboard
 Color: UV Spot Color
 Finishing: Matte



Auto-lock structure



RIGID BOX

Packaging is the wrapping material around a consumer item that serves to contain, identify, describe, protect, display, promote and otherwise make the product marketable and keep it clean.

Packaging has now become an essential part of any company's marketing strategies and, more importantly, the only thing responsible for "dressing" the product and ensuring it appears more attractive and stands out from all its competitor's product.

RIGID BOX

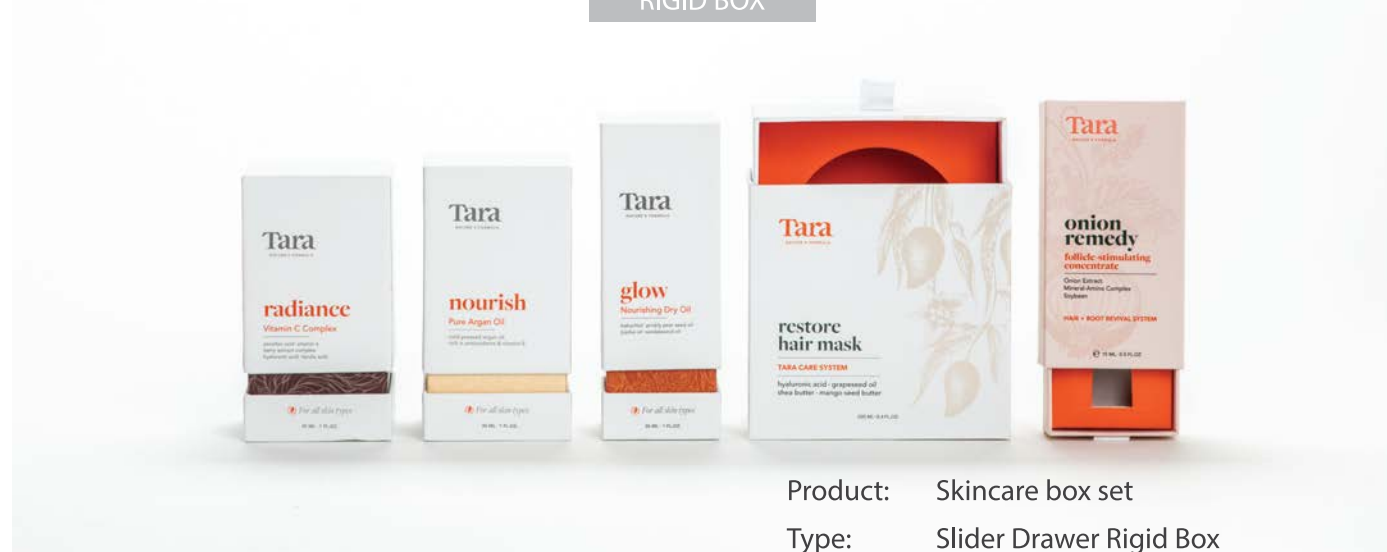


Packaging Product: Cuffins
Type of Box: Custom Box with Leather pillow insert
Material: 150gsm Artpaper + 1000gsm Greyboard
Color: 2 Pantones
Finishing: Matte Lamination + Texture deboss
Note: Leather pillow insert



Packaging Product: Skin Care
Type of Box: 3 layer Gift Rigid Box + Paper Insert
Material: 150gsm Fancy Paper+ 1000gsm Greyboard + 150gsm Silver Paper
Color: 1 Pantone
Finishing: Hot Stamp Foil + Deboss
Speciality: 3 Layers Gift Box with Silver wrapped wall.

RIGID BOX



Product: Skincare box set
Type: Slider Drawer Rigid Box
Material: C1S Paper + Rigid Cardboard
Color: SPOT Colors
Finishing: Soft-Touch Lamination



Product: Eyelash box set
Type: Hexagon PR Box
Material: C1S Paper + Rigid Cardboard wrap
Color: 2PMS + CMYK
Finishing: Matte Lamination



Product: Food
Type: Cylinder Box
Material: 157gsm Artpaper + 1000gsm fiberboard
Color: 2 colors
Finishing: Hot Stamp Foil



Product: Food
Type: Octagon Box
Material: 157gsm Artpaper + 1000gsm fiberboard
Color: 2 colors
Finishing: Embossing, Hot Stamp Foil, Matte Lamination

RIGID BOX



Packaging Product: Small Accessories
 Type of Box: 1 Piece Tray with PVC Lid
 Material: 150gsm Artpaper + 1000gsm Greyboard
 Color: 2 Pantones
 Finishing: Matte Lamination
 Note: PVC lid is printed by Silk Screen Print.



Packaging Product: Small Accessories
 Type of Box: 2 Piece Tray
 Material: 150gsm Artpaper + 1000gsm Greyboard
 Color: 1 Pantone
 Finishing: Matte Lamination
 Note: Large area hot stamp foil



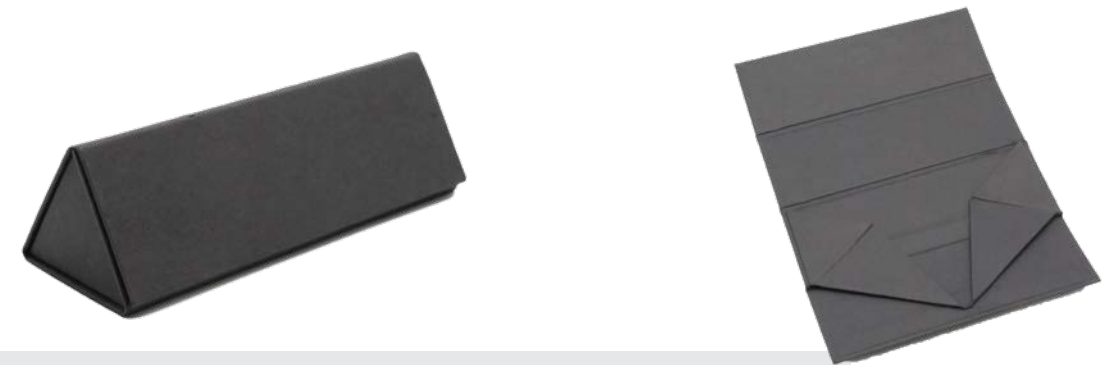
Packaging Product: Small Accessories
 Type of Box: Match Box / Drawer Box Style
 Material: 150gsm Artpaper + 1000gsm Greyboard
 Color: 1 Pantone
 Finishing: Matte Lamination + Hot Stamp Foil
 Note: Large area hot stamp foil



COLLAPSIBLE RIGID BOX



Collapsible Rigid Box - Rectangle shape with folding flap and ribbon tap



Collapsible Rigid Box - Triangle tube shape



Collapsible Rigid Box - Square box structure

Folding paper inserts
Material: Paper
Color: Any color



Folding paper insert

Note

Printable
Able to ship flat
Require folding work during packing



Blister Tray (Thermo-formed plastic tray)
Material: PET, PVC, PP
Color: Black, White and Transparent
*Customize color requires M.O.Q

**Blister Case
(Plastic Moulded Insert)**

Note

Good product protection
Durable
Easy for product packing



Paper Bulb (Thermo-formed paper tray)
Material: Recycled Paper, Natural Fiber
Types: Dry Press and Wet Press



Dry Press

Note

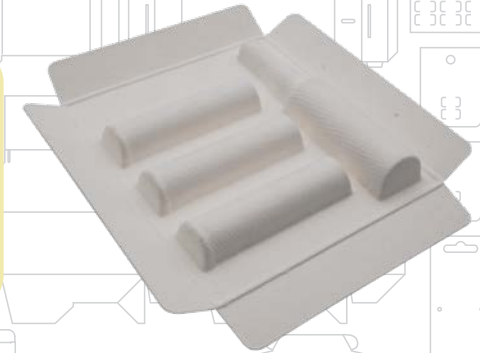
Rough texture, where the paper grain is visible
Lower Mould cost



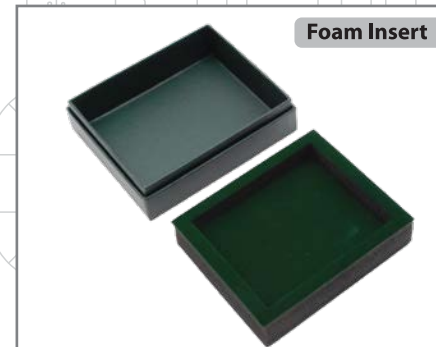
Wet Press

Note

Smooth surface appearance
Higher mould cost



Soft Inserts
Material: EVA, Foam



Foam Insert



FOAM

Foam Insert

Note

Softer strength compare to EVA
Easy to pack
Good shock asorbent



EVA Insert



EVA

EVA Insert

Stronger in strength than Foam.
Cleaner look
Higher cost than foam

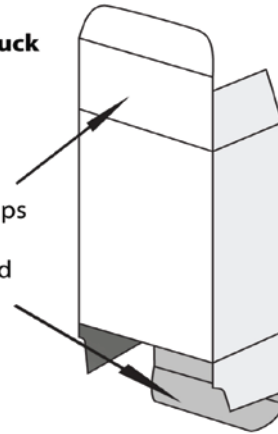
Plain / Construction samples



Useful Knowledge for Folding Boxes

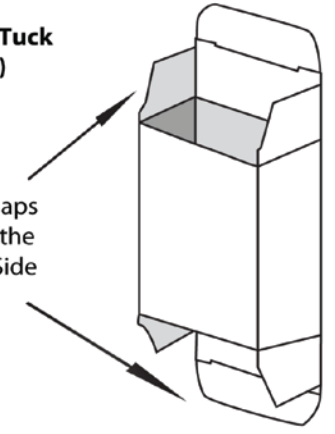
Reverse Tuck End (RTE)

Tuck Flaps are Reversed

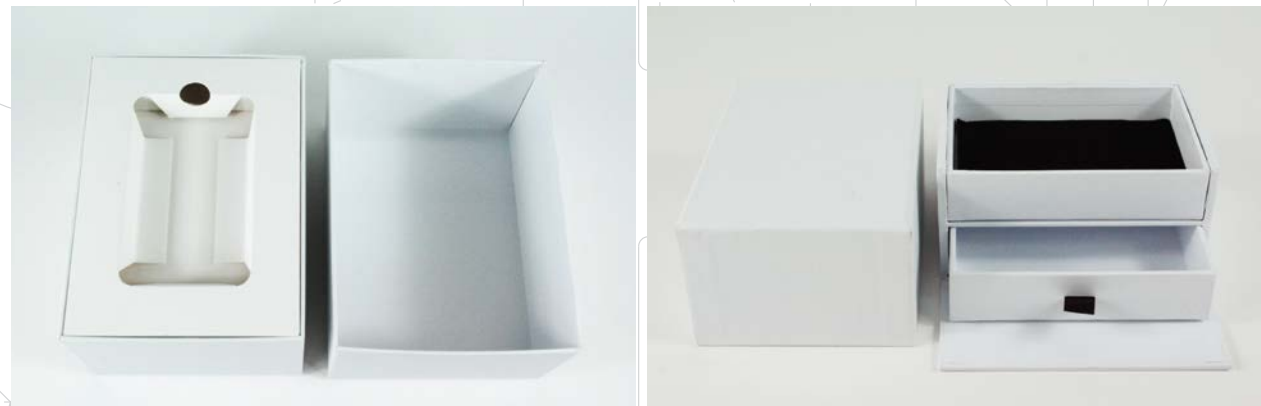


Straight Tuck End (STE)

Tuck Flaps are on the Same Side



Rigid Box Sample with Inserts



Reverse Tuck End (RTE)

The top closure tucks from the rear to the front, and the bottom closure tucks from the front to the rear.

Reverse Tuck End (STE)

The top closure tucks from the rear to the front, and the bottom closure tucks from the front to the rear.

PROS to RTE Style Box

Cost effective because it can run more boxes at one time on the same sized paperboard as opposed to the straight tuck end, and reducing waste.

PROS to STE Style Box

More luxurious than RTE because there are no white raw edges visible on the front of the box.

CONS to RTE Style Box

Not as aesthetically pleasing because of the visible raw edges in the front of the box.

CONS to STE Style Box

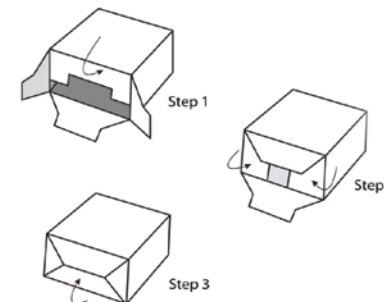
More expensive, less boxes at one time per paperboard sheet.

Clamshell Card white samples with Blister samples

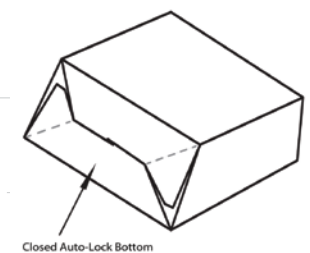


Box lock types

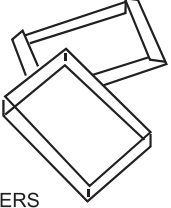
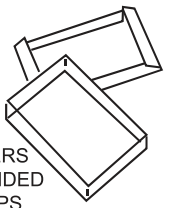
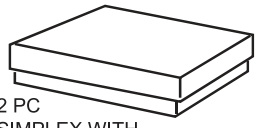
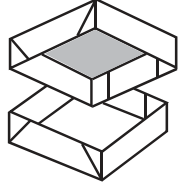
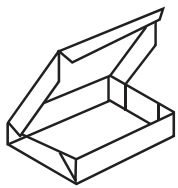
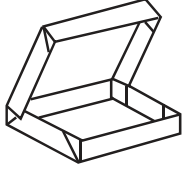
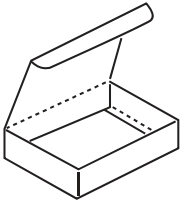
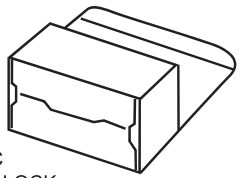
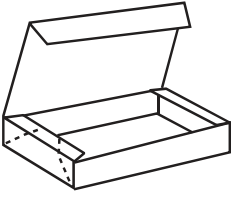
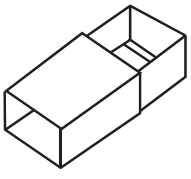
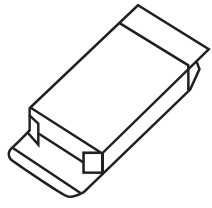
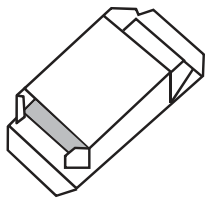
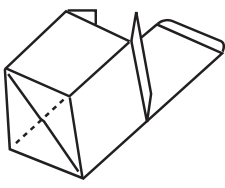
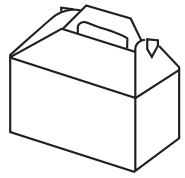
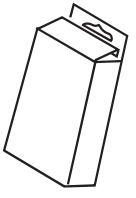
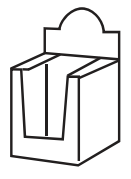
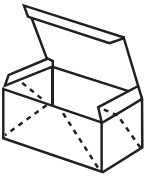
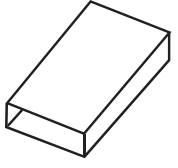
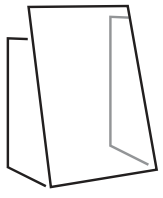
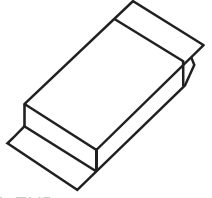
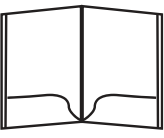

Snap Lock Bottom



Auto Lock Bottom



Common Type of Folding Carton/Box

<p>1.</p>  <p>2 PC BEERS</p>	<p>2.</p>  <p>2 PC BEERS W/EXTENDED END FLAPS</p>	<p>3.</p>  <p>2 PC SIMPLEX WITH SHALLOW LID</p>	<p>4.</p>  <p>2 PC LOCK CONTAINER</p>
<p>5.</p>  <p>1 PC LOCK CORNER</p>	<p>6.</p>  <p>1 PC 4 CORNER OR 6 CORNER GLUED</p>	<p>7.</p>  <p>1 PC PINCH LOCK</p>	<p>8.</p>  <p>1 PC DBL LOCK BOTTOM, TUCK TOP (PONY)</p>
<p>9.</p>  <p>1 PC BEERS CAKE</p>	<p>10.</p>  <p>2 PC MATCH BOX (SIMPLEX BOTTOM, GLUED SLEEVE TOP)</p>	<p>11.</p>  <p>REVERSE TUCK END (RTE)</p>	<p>12.</p>  <p>STRAIGHT TUCK END (STE)</p>
<p>13.</p>  <p>1 PC REG. AUTO BOTTOM TUCK TOP</p>	<p>14.</p>  <p>1 PC FULL AUTO BOTTOM BARN STYLE WITH LOCKING HANDLE</p>	<p>15.</p>  <p>1 PC REG. AUTO BOTTOM TUCK TOP WITH HANGER TAB</p>	<p>16.</p>  <p>1 PC SNAP LOCK BOTTOM FULL TUCK TOP DISPLAY</p>
<p>17.</p>  <p>1 PC FRONT FOLD TUCK TOP</p>	<p>18.</p>  <p>GLUED SLEEVE</p>	<p>19.</p>  <p>EASEL BACK DISPLAY</p>	<p>20.</p>  <p>SEAL END</p>
<p>21.</p>  <p>PRESENTATION FOLDER</p>	<p>22.</p>  <p>1 PC GLUED ENVELOPE WITH LOCKING TABS</p>		